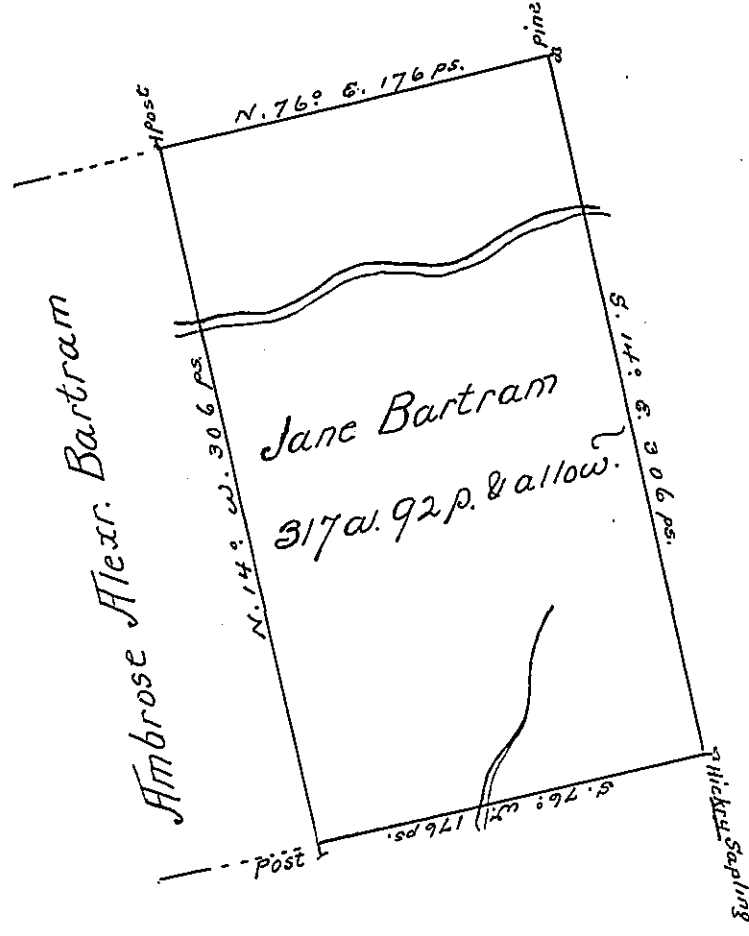


Pg 52



A Draught of a Tract of land called —
 Situate on a branch of Fishing Creek adjoining land
 Surveyed for Amb^s Alexander Bartram in the County
 of Northumberland containing three hundred and
 seventeen acres and ninety two perches besides the usual
 allowance of 6 p bent for Road &c^a Surveyed the 7th
 day of September 1773 for Jane Bartram In pursu-
 ance of a Warrant dated July 20th 1773.

by
 Chas. Stewart Dep. Surv^r

To John Lukens Esqr.
 Surveyr. Genl.

IN TESTIMONY that the above is a copy of the original remaining on file in
 the Department of Internal Affairs of Pennsylvania, made
 conformably to an Act of Assembly approved the 16th day of
 February, 1833, I have hereunto set my Hand and caused
 the Seal of said Department to be affixed at Harrisburg,
 this sixth day of October 1903

Geo. R. Brown
 Secretary of Internal Affairs.